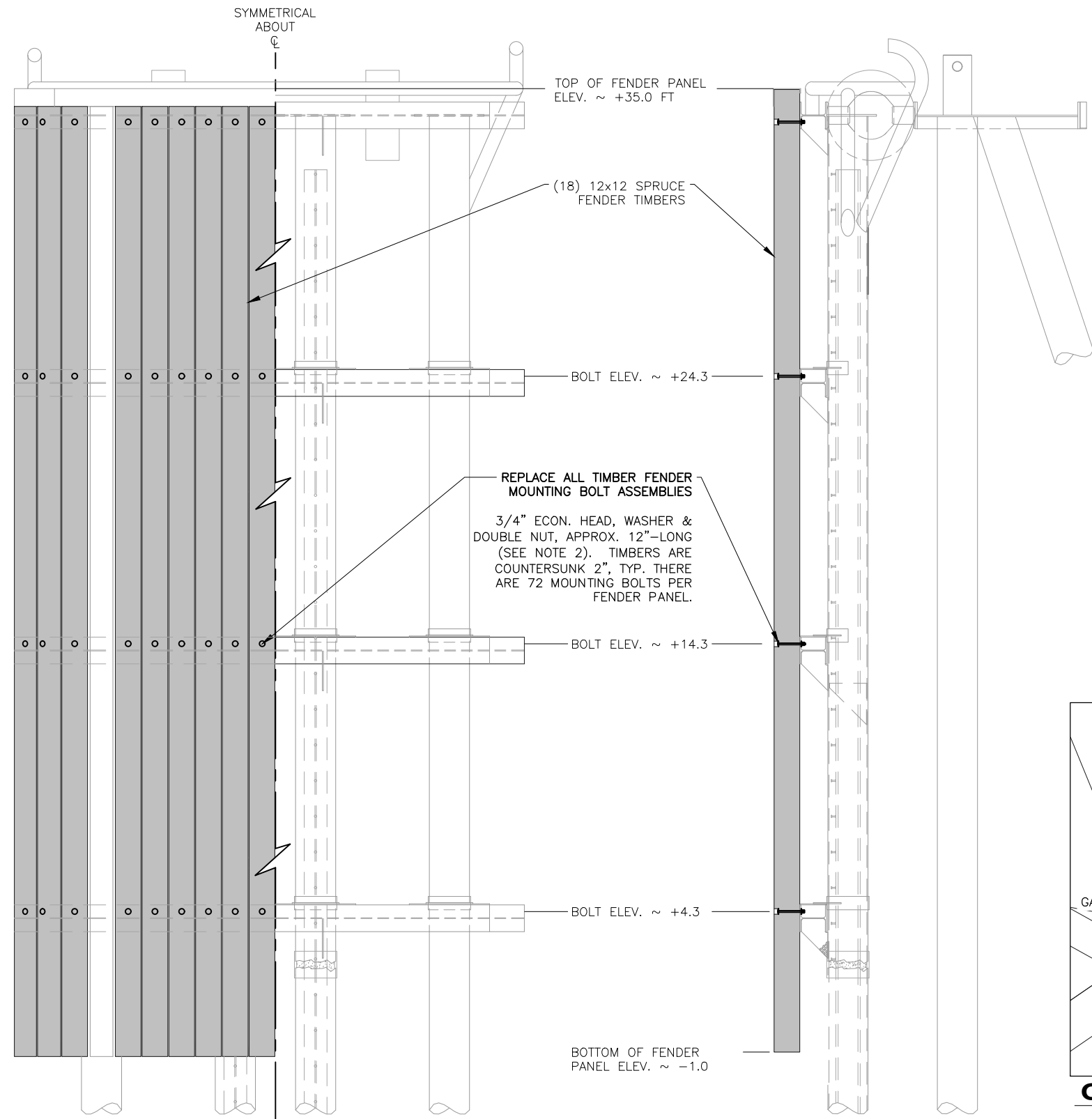


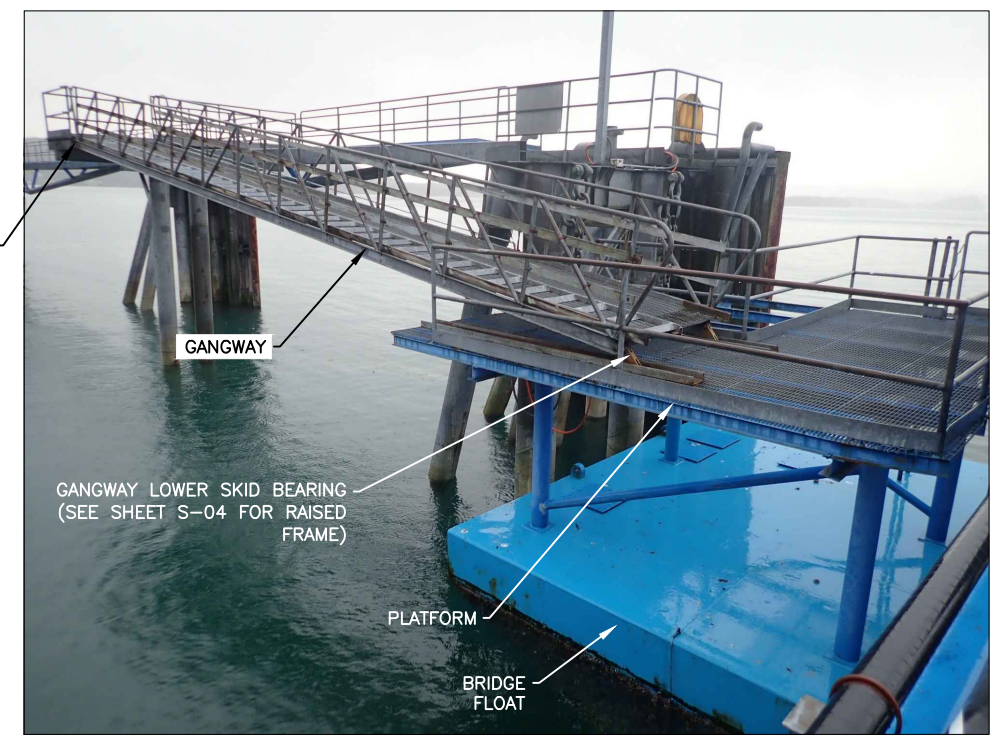
FILE \\dct.soa.alaska.gov\shared\SR_ProjectData\ju\SAMHS00084\WF\CONSTRUCTION\Added_repair_work\Plans\01\10\in_Edy\20210415_50\14\10\OUT_S-03
 DESIGNED
 CHECKED STAFF
 DRAFTED STAFF

NO.	DATE	REVISION	STATE	PROJECT DESIGNATION	YEAR	SHEET NO.	TOTAL SHEETS
			ALASKA	SAMHS00084/0933047	2021	S-03	5

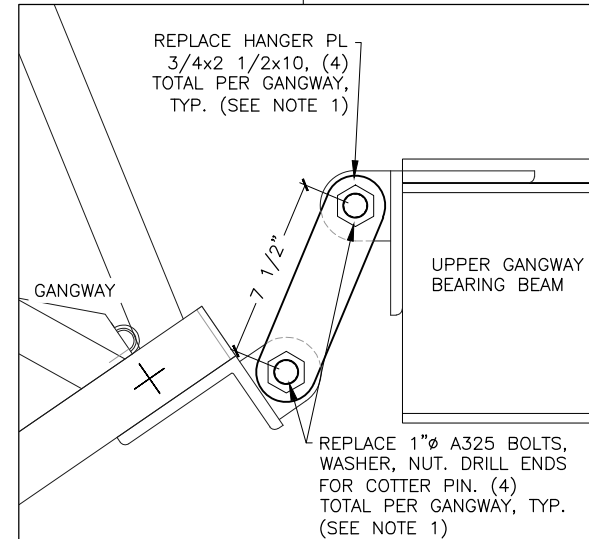


MOORING DOLPHIN E1 & W1
FRONT ELEVATION

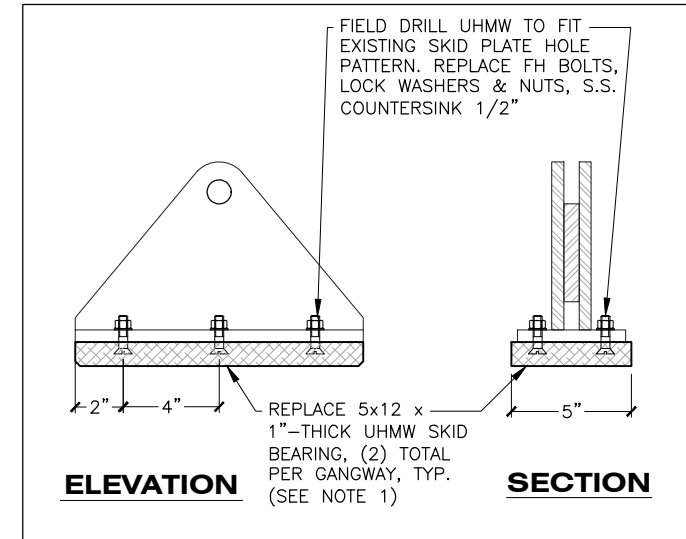
MOORING DOLPHIN E1 & W1
SIDE ELEVATION



GANGWAY & PLATFORM
ELEVATION



GANGWAY UPPER BEARING
PIN-HANGER ELEVATION



GANGWAY LOWER BEARING
UHMW SKID ELEVATION

Record Drawings have been reviewed by the Project Engineer, and represent to the best of my knowledge, the project as constructed.

PE _____

- NOTES:
- REPAIR BEARINGS AS SHOWN ON BOTH EAST & WEST GANGWAYS.
 - FIELD VERIFY DIMENSIONS OF CONNECTION HARDWARE BEFORE ORDERING MATERIALS.

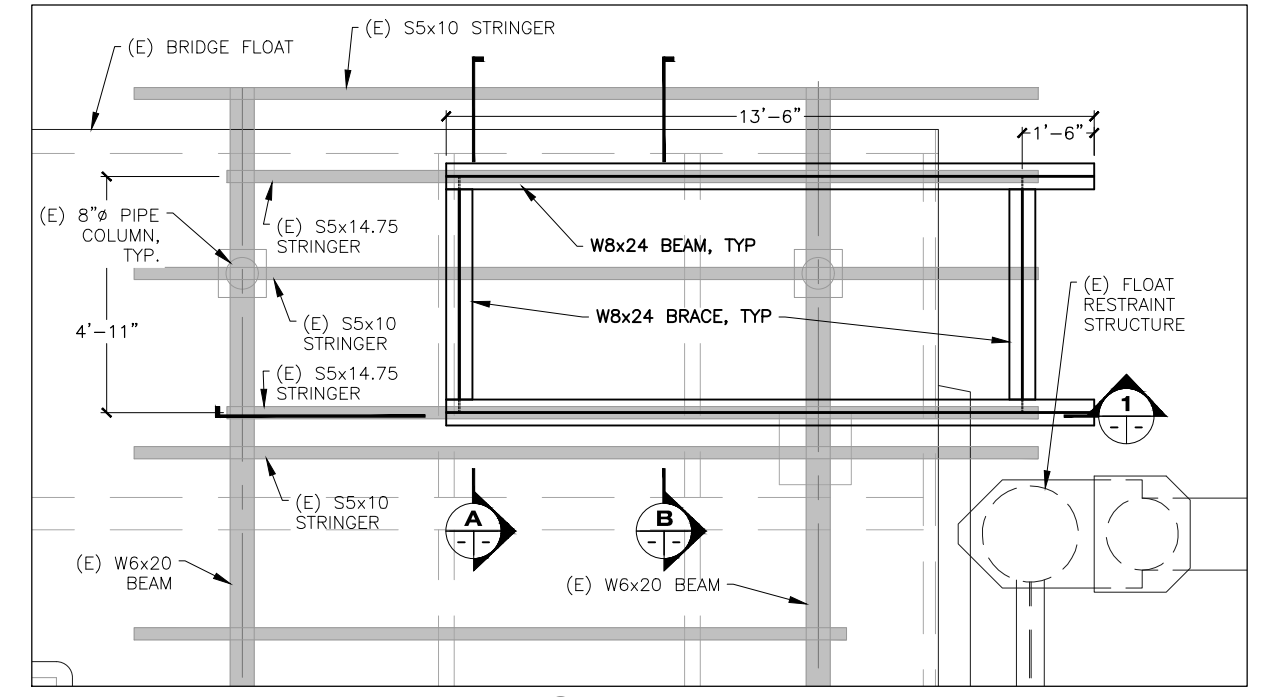
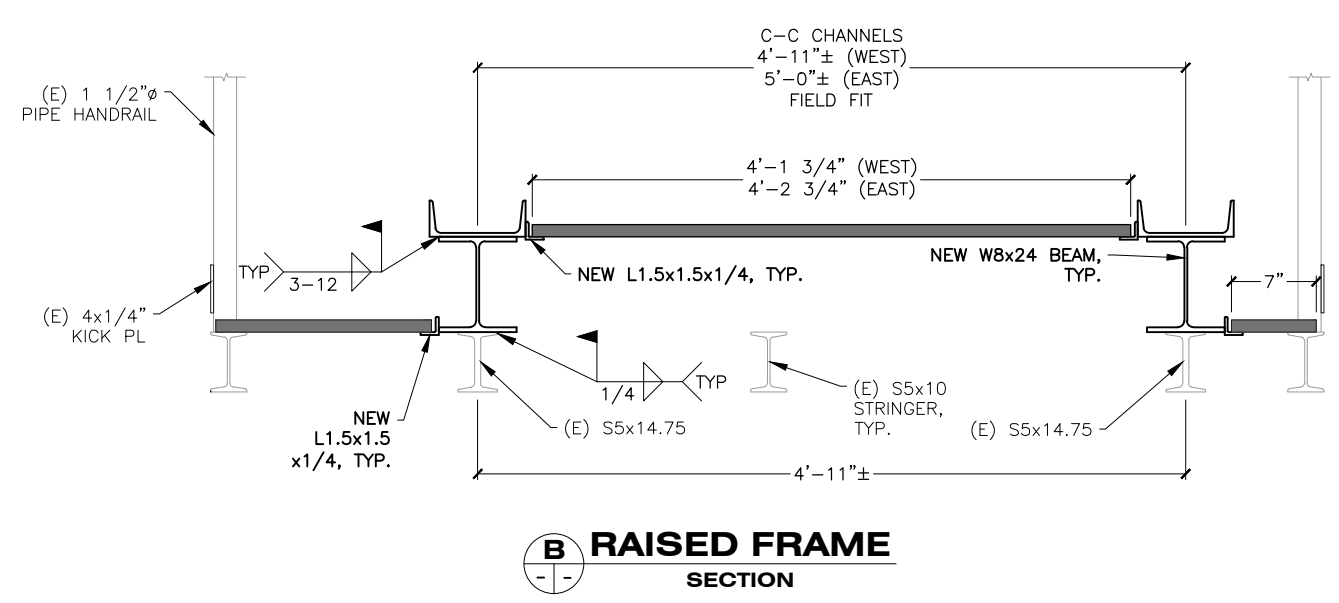
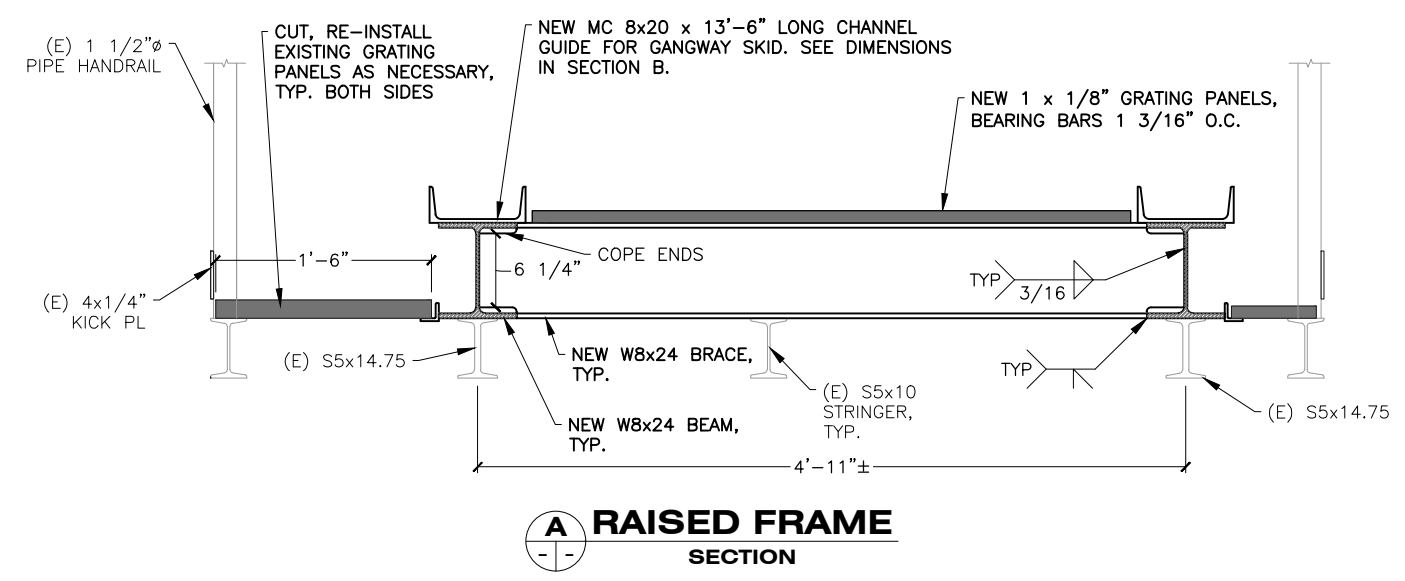
STATE OF ALASKA DEPARTMENT OF TRANSPORTATION AND PUBLIC FACILITIES
 6860 GLACIER HIGHWAY, JUNEAU, AK 99801
 (907) 465-1763

AUKE BAY FERRY TERMINAL MODIFICATIONS & IMPROVEMENTS
ADDITIONAL REPAIRS @ MAIN BERTH
 E1 FENDER BOLTS & GANGWAY PIN-HANGERS

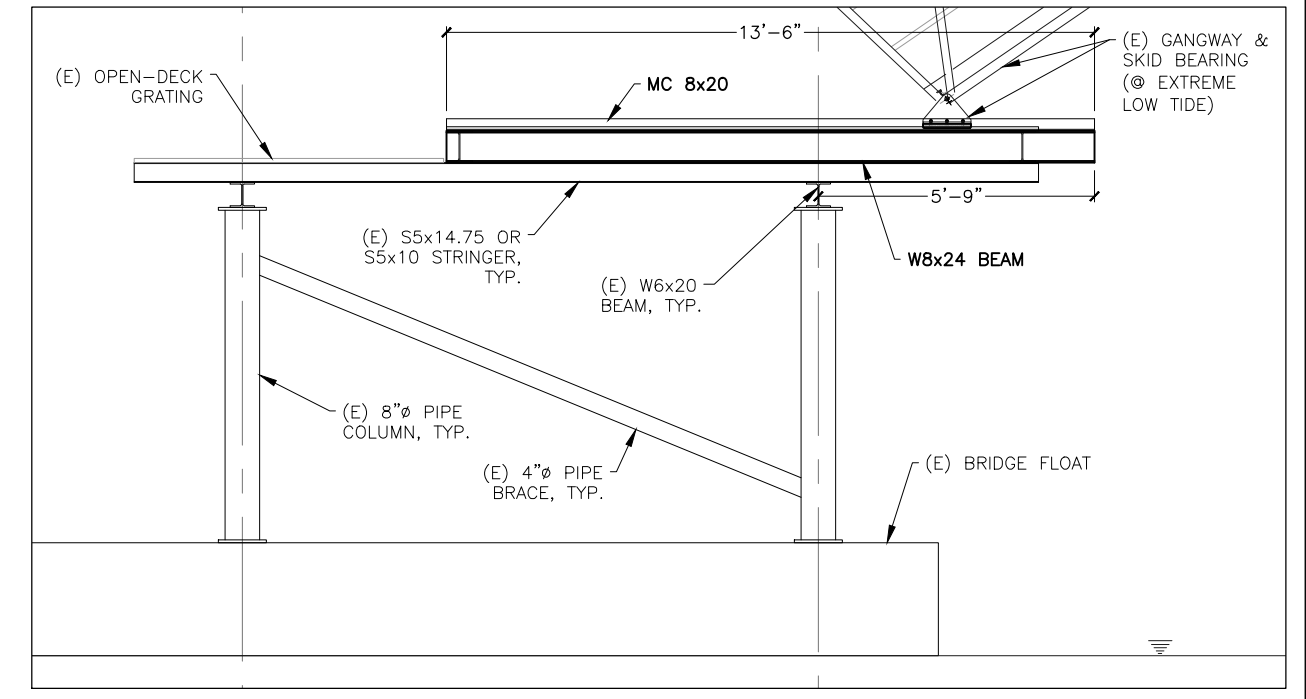
3/9/2021

NO.	DATE	REVISION	STATE	PROJECT DESIGNATION	YEAR	SHEET NO.	TOTAL SHEETS
			ALASKA	SAMHS00084/0933047	2021	S-04	5

FILE \\dct.soa.alaska.gov\shared\SR_ProjectData\Jun\SAMHS00084\WF_CONSTRUCTION\Added_repair_work_Plans\011101\012020\0933047.dwg
 DRAFTED STAFF
 CHECKED STAFF
 DESIGNED STAFF
 S-04



NOTE: GRATING PANELS NOT SHOWN FOR CLARITY



Record Drawings have been reviewed by the Project Engineer, and represent to the best of my knowledge, the project as constructed.

 PE _____

- RAISED FRAME NOTES:**
1. NEW STEEL MATERIALS SHALL MEET SPECS IN SECTION 501 AND BE GALVANIZED AFTER FABRICATION PER SPECS.
 2. REPAIR DAMAGED COATINGS ON NEW AND EXISTING MATERIALS PER SECTION 504-3.03.

STATE OF ALASKA DEPARTMENT OF TRANSPORTATION AND PUBLIC FACILITIES
 6860 GLACIER HIGHWAY, JUNEAU, AK 99801
 (907) 465-1763

AUKE BAY FERRY TERMINAL MODIFICATIONS & IMPROVEMENTS
ADDITIONAL REPAIRS @ MAIN BERTH
RAISED FRAME @ LOWER GANGWAY BEARING

 3/10/2021